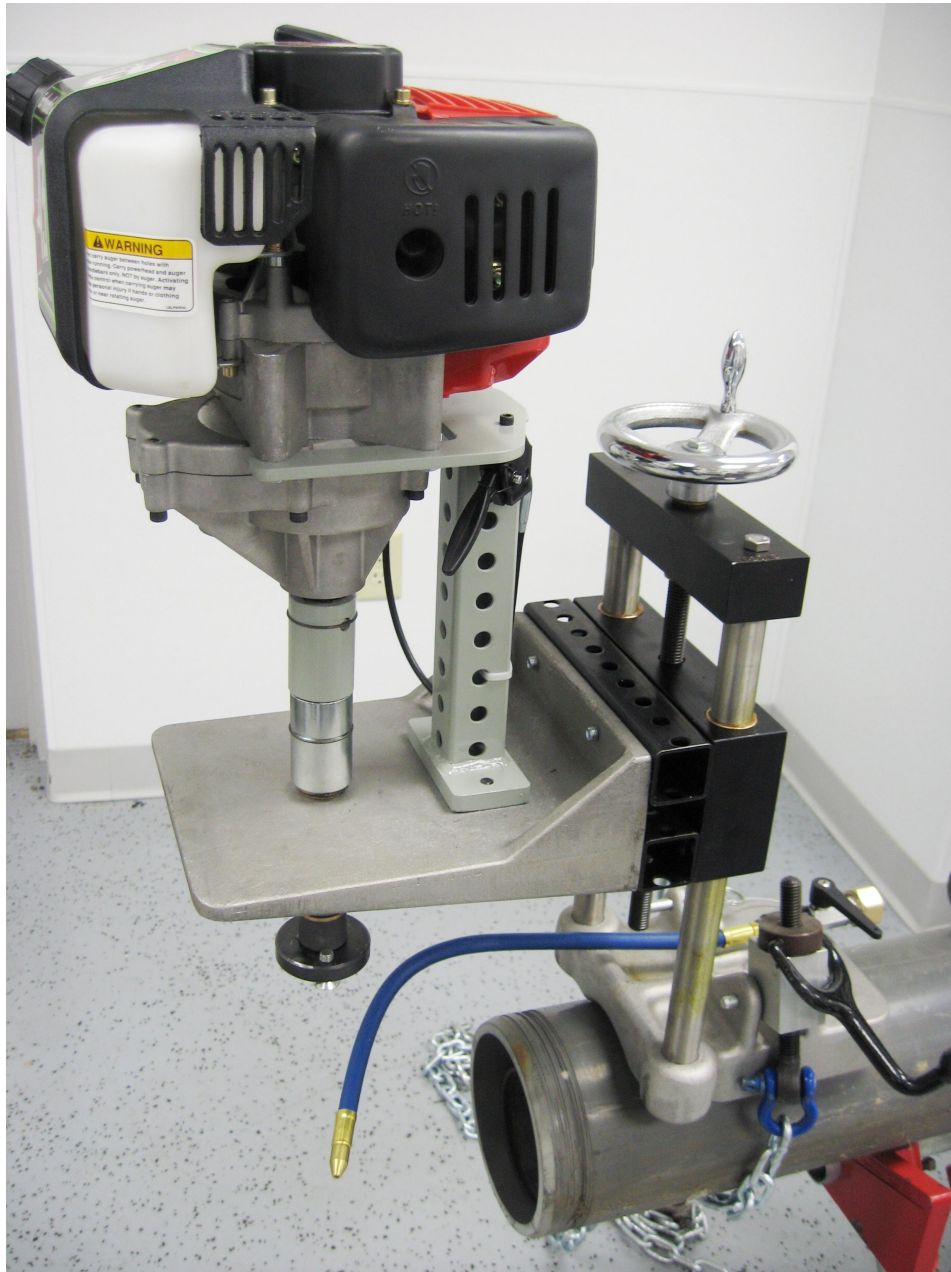


1660 Hole Cutter System Operation and Service Manual



Wheeler-Rex • Ashtabula, Ohio
Tel: 800-321-7950 • Fax: 440-992-2925
wheeler@wheelerrex.com
www.wheelerrex.com

November 2012

Choosing the Shell Cutter

There are three different types of shell cutters.



For Clay and Concrete

Nominal Hole Size	Part No.
4"	3395
4 1/2"	3450
6"	3595
6 1/2"	3650



**For Reinforced Concrete,
Clay, Ductile Iron and Cast Iron**

Nominal Hole Size	Part No.
4"	6395
4 1/2"	6450
6"	6595
6 1/2"	6650
8"	6800



For Plastic

Nominal Hole Size	Part No.
4"	4395
4 1/2"	4450
6"	4595
6 1/2"	4650
8"	4800

Changing the Shell Cutter



Remove the two (2) screws from the arbor.



Loosen the set screw with the Allen key and insert pilot drill. Make sure pilot drill is aligned for the set screw to tighten on drill flat.



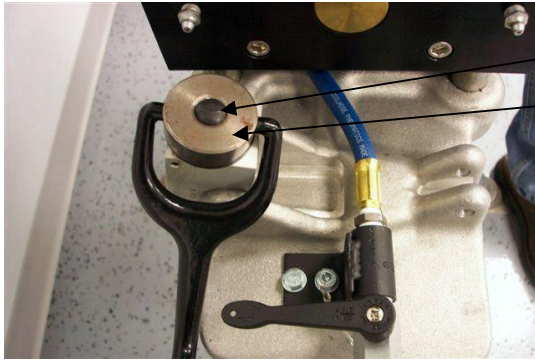
Attach the shell cutter with the two (2) screws.

**** Shell cutters & pilot drill are sold separately from the hole cutter unit.****

Hole Cutter Setup



Set the hole cutter on the pipe.



Screw

Nut

Unscrew hand clamp until screw is flush with nut.



Make sure the pipe is nested properly in the saddle of the base casting. Pull chain under pipe and back to casting base. Place one chain link between casting and push pin through base and chain link. Tighten chain with hand crank.

Operating the Gas Powered Engine

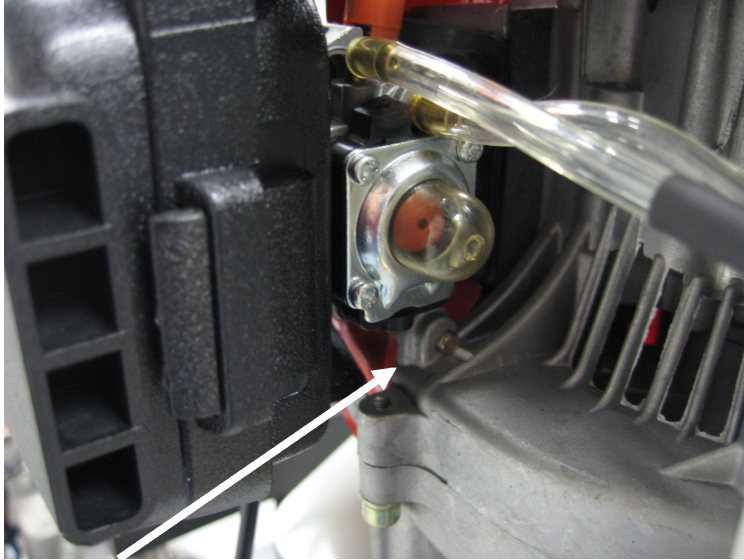


Read Engine manual and instructions prior to starting engine.

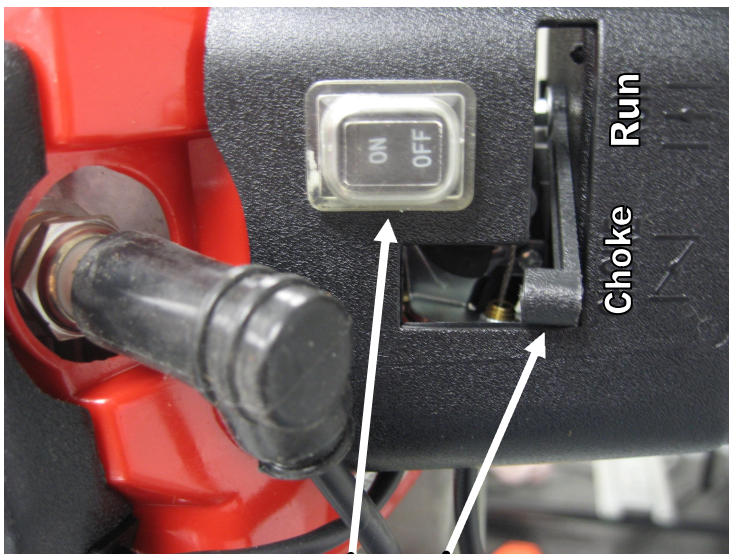


Mix gas & 2 cycle oil according to engine manufacture's instructions.

Fill gas tank.



Gas primer ball



Engine Off / On Switch
Engine Choke / Run Switch



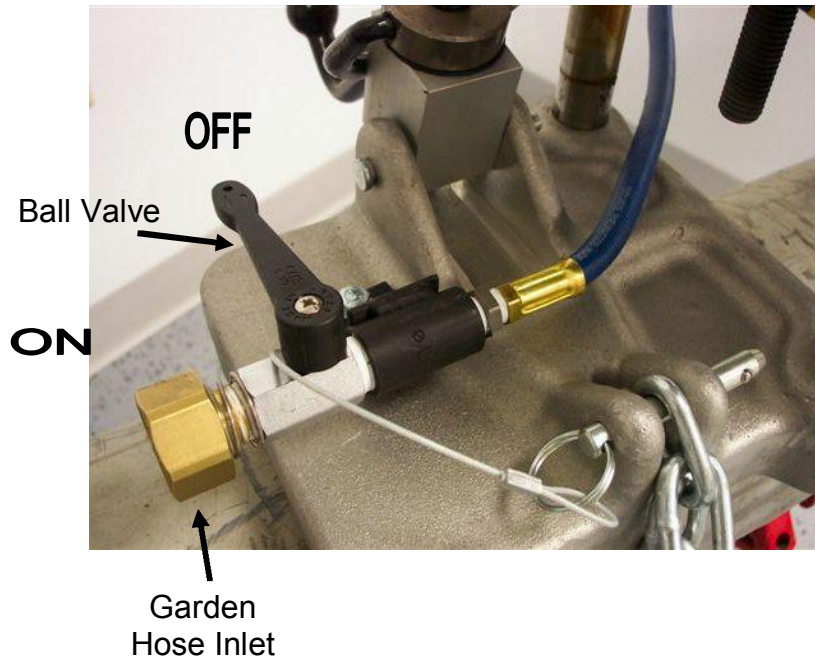
Pull start handle and start the engine.



Engine throttle lever.

Once engine is running, use throttle lever to control engine speed during cutting operation.

Preparing for the Cut



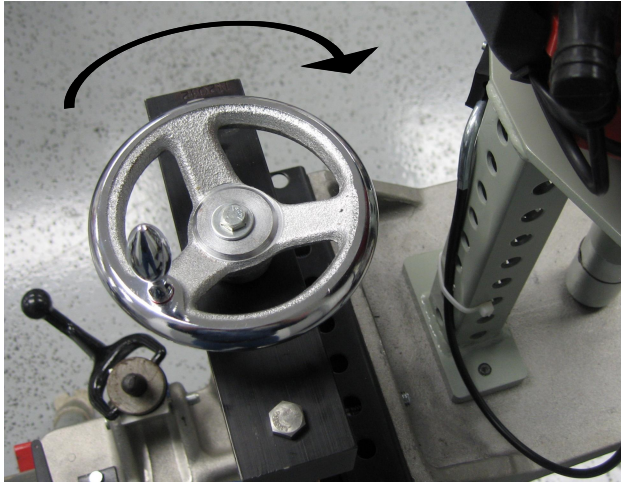
Attach garden hose to valve connection. Turn water on at source. Keep ball valve "OFF" until ready to make cut. This ball valve can also be used to control the water flow.



Adjust flexible hose for water stream to point on shell cutter. This is to help keep the cutter cool as well as flush away chips.

Making the Cut

1. Turn fluid valve to “ON” position.
2. Pull throttle lever to increase speed and power of the gas engine.

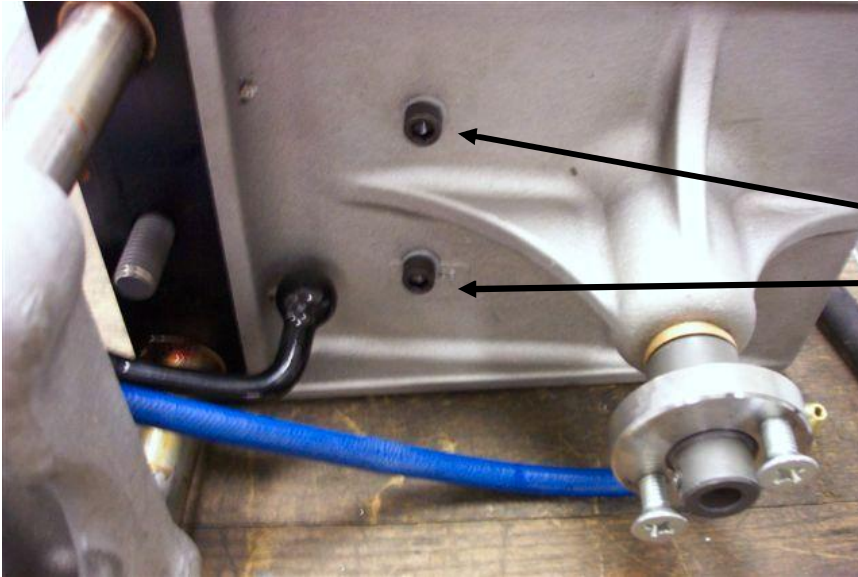


Slowly turn feed hand wheel in the clockwise position to lower the shell cutter. A heavy feed rate may damage shell cutter or pipe that is being cut. Allow shell cutter to cut material with a slow, steady turn of the feed wheel. If at anytime there are problems making the cut, stop cutting immediately.

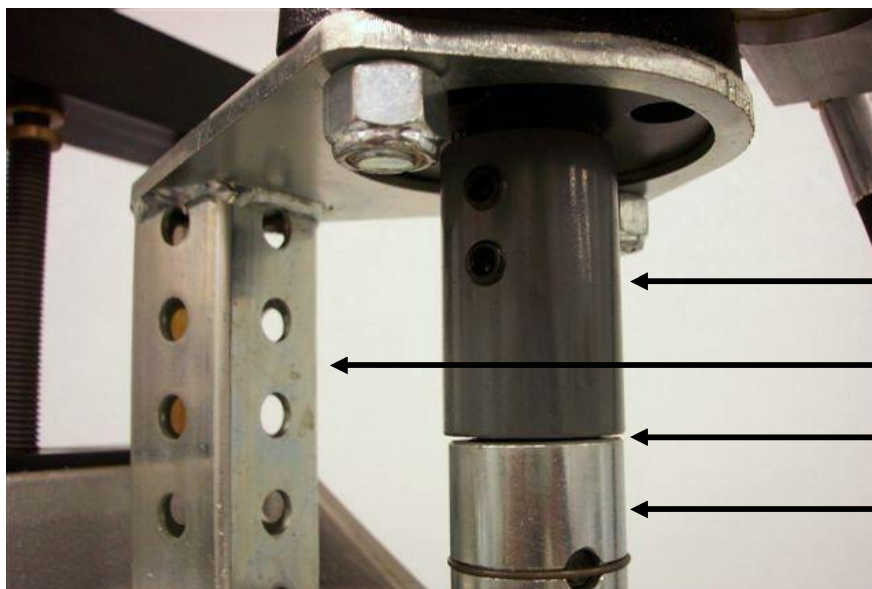
Other Options

The hole cutter is a modular system where the base, feed mechanism and arbor assembly remain the same. The power supply is interchangeable with four different options: Electric, gas, pneumatic, and hydraulic.

Here is how to change power supplies:

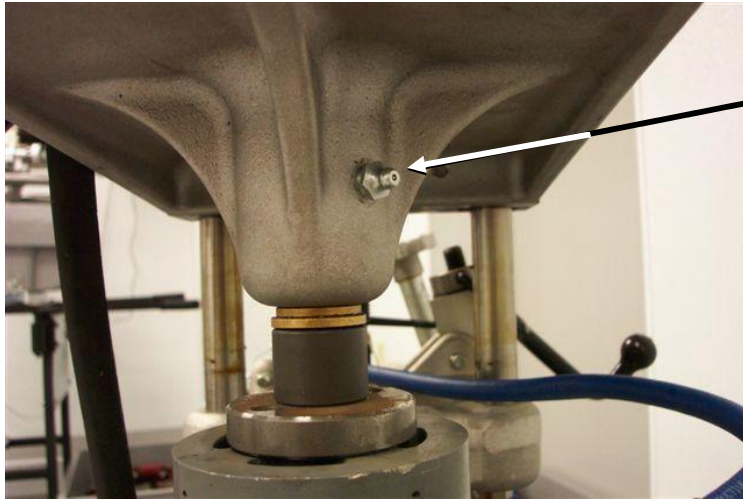


Remove the two (2) socket head cap screws from the platform.



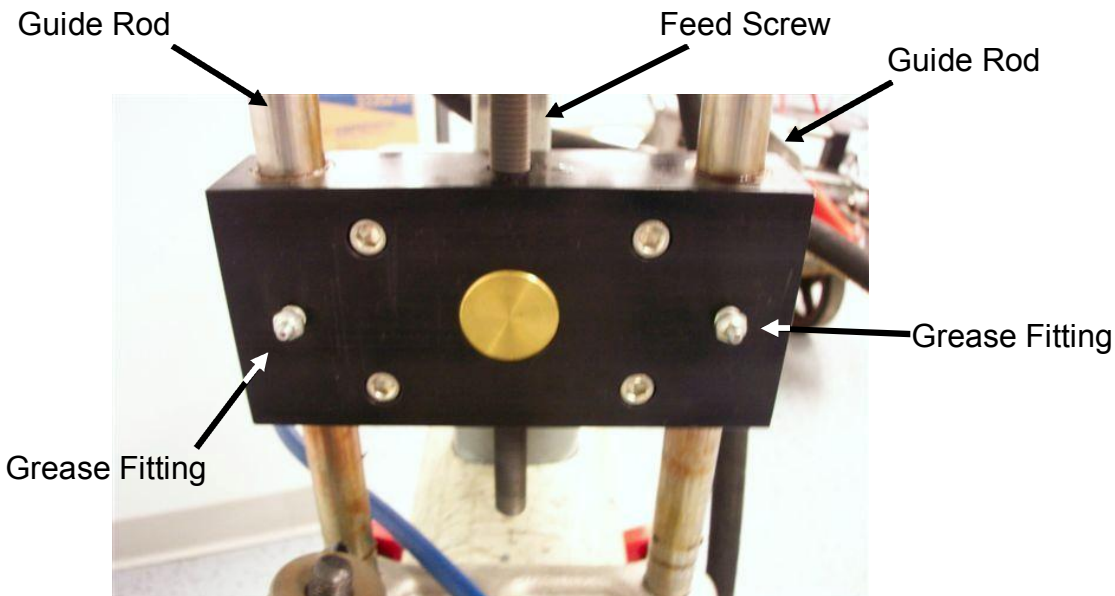
Separate the motor assembly from the arbor assembly. You can now replace the power assembly.

Maintenance



Grease Fitting

Grease arbor shaft prior to each use.



Guide Rod

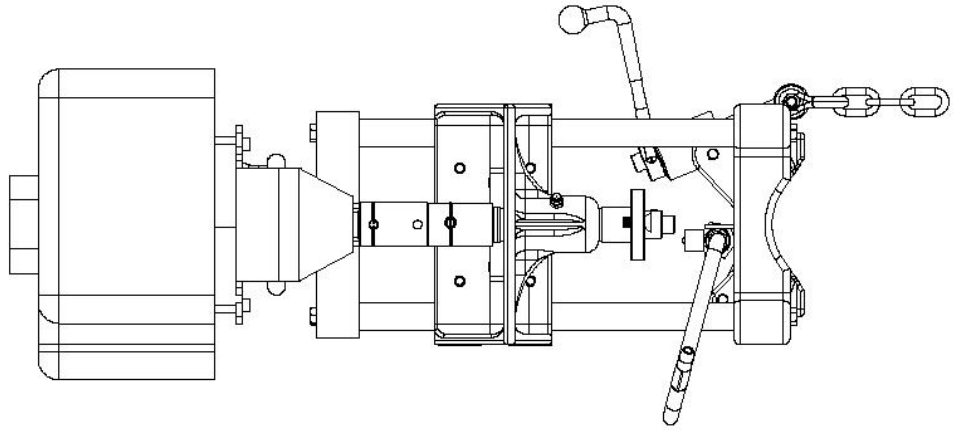
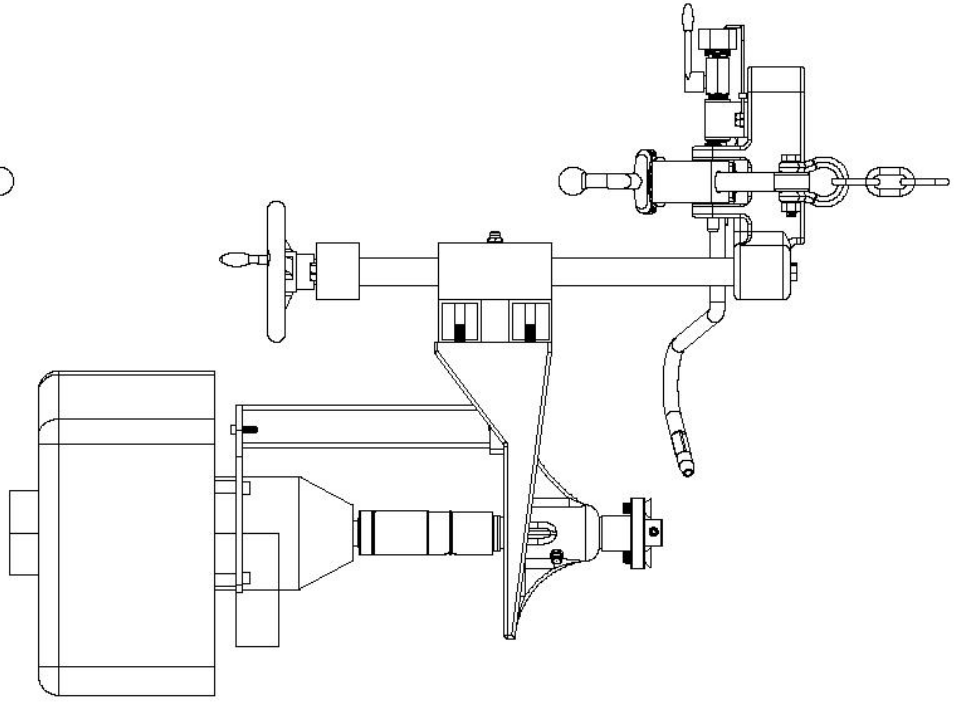
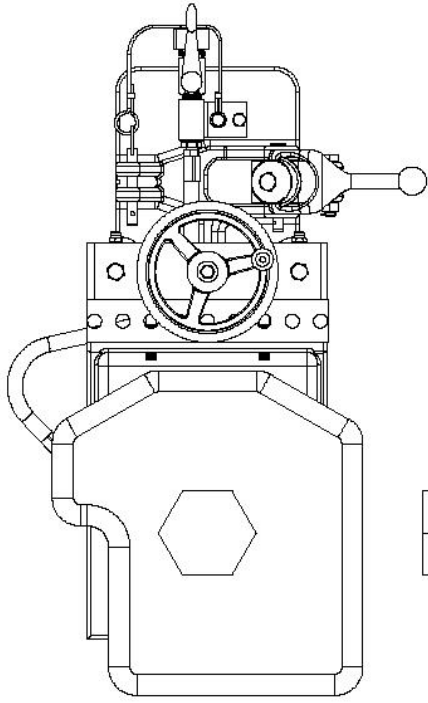
Feed Screw

Guide Rod

Grease Fitting

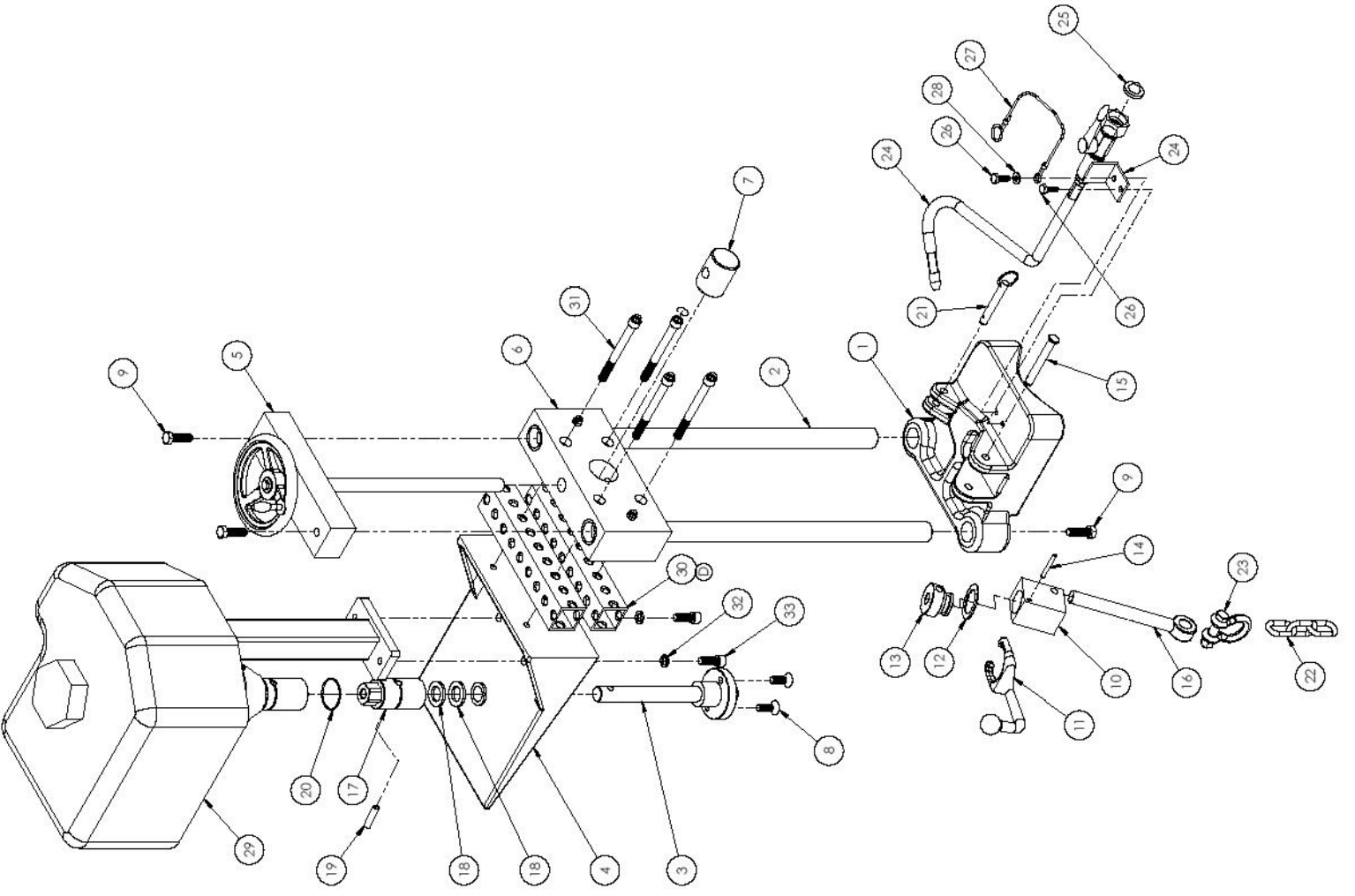
Grease Fitting

Grease guide rod bushings prior to each use. Clean guide rods after each use. Clean feed screw before and after each use.

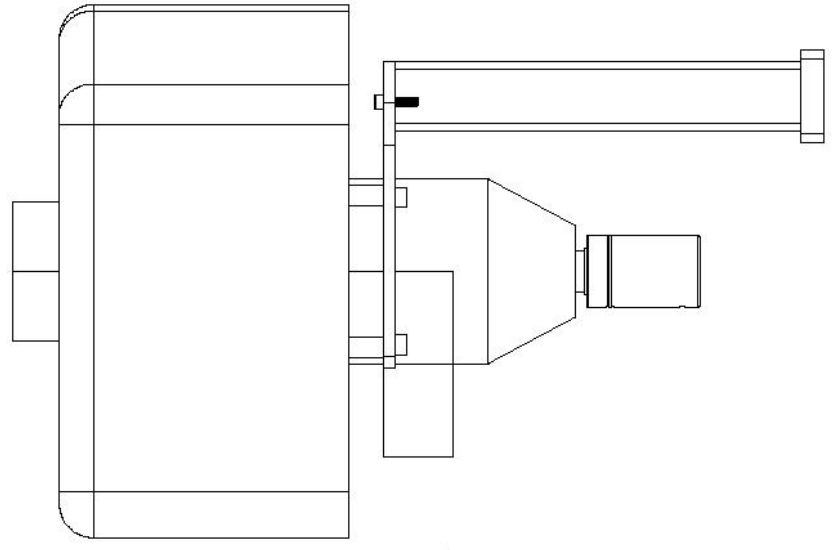
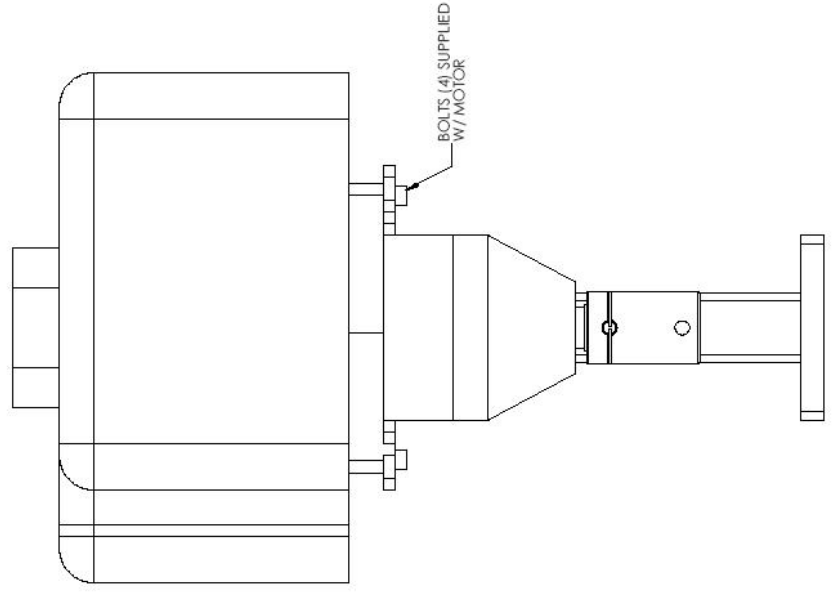
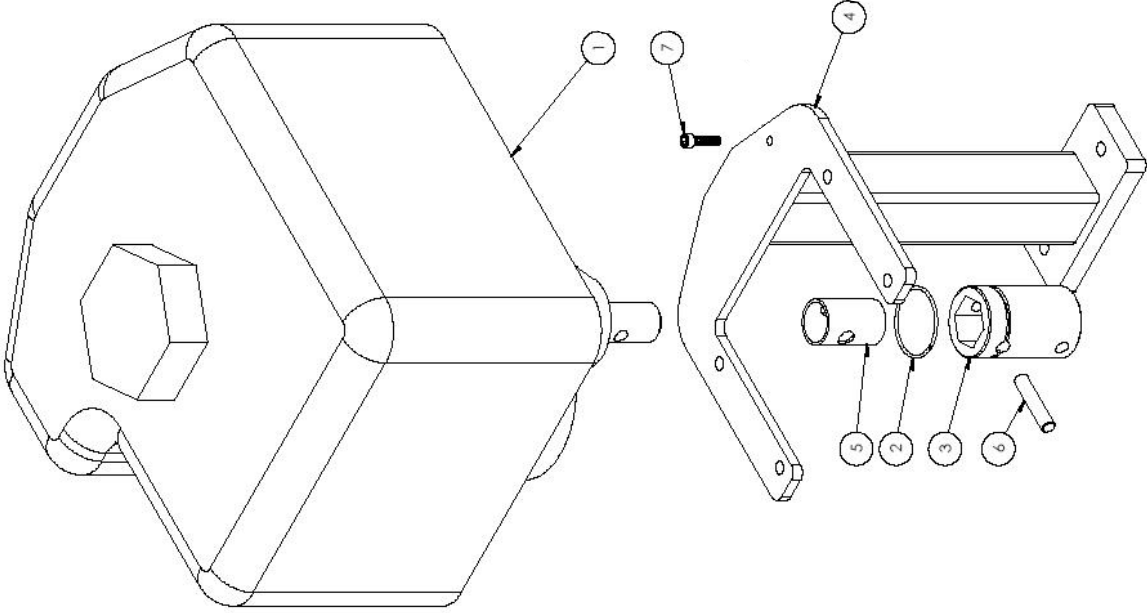




3244 Jefferson Rd., Ashabula, OH 44005
DESCRIPTION:
HOLE CUTTER ASSEMBLY
PART NO. 1660



Item	PN	Description	Qty
1	700991	Base (Machined)	1
2	700431	ROD	2
3	700443	ARBOR ASSEMBLY	1
4	700441	ARBOR HOUSING ASSEMBLY	1
5	700438	HEAD ASSEMBLY	1
6	700433	ELEVATOR ASSEMBLY	1
7	700436	DRIVE BLOCK	1
8	12011	3/8-16 x 1" PHILLIPS FLAT HEAD MACHINE SCREW	2
9	276541	3/8-16 x 1 1/4" SS HEX HEAD CAP SCREW	4
10	700985	CHAIN TENSION BLOCK	1
11	606742	HANDLE	1
12	606751	BEARING	1
13	700989	CRANK NUT	1
14	275862	3/16" DIA x 1 1/2" ROLL PIN	1
15	276892	COTTERLESS CLEVIS PIN 3/8" x 3" LONG	1
16	276592	5/8-11 x 6" FULLY THREADED EYE BOLT	1
17	700445	BORING CAP	1
18	276481	THRUST BEARING (ST 2440-4)	2
19	276097	DOWEL PIN	1
20	260	CAP PIN RETAINER	1
21	276891	3/8" x 2" LONG DETENT PIN	1
22	700397	6' LONG CHAIN	1
23	276591	3/8" x 1" CHAIN SHACKLE	1
24	701079	FLUID ASSEMBLY	1
25	275917	STRAINER	1
26	560081	1/4-20 x 3/4" HHCS	2
27	276073	6" LANYARD	1
28	10713	3/16" FLAT WASHER	1
29	700449	ENGINE & MOUNT ASSEMBLY	1
30	701397	SPACER	2
31	277198	3/8-16 X 3 3/4" SHCS	4
32	7179	3/8" SPLIT LOCK WASHER	2
33	275118	3/8-16 x 1" SOCKET HEAD CAP SCREW	2



Item	PN	Description	Qty
1	277193	EARTHQUAKE E43 ENGINE	1
2	260	CAP PIN RETAINER	1
3	220366	POWER ADAPTOR	1
4	701366	MOUNT ASSY	1
5	700117	SHAFT BUSHING	1
6	275420	DOWEL PIN	1
7	6513	#10-24 SHCS	1